

# Berkshire House

CONTEMPORARY NEW OFFICE SUITES IN EXCELLENT CENTRAL ASCOT LOCATION

Illustrative CGI

## Being redeveloped to include:

- Various suite sizes from 1,000 to 17,400 sq ft
- Remodelled front elevation incorporating new double glazing
- New entrance and lift (DDA compliant)
- Attractive first & second floor reception areas
- New air conditioning throughout
- New kitchen, WCs and showers
- Private dedicated parking (45 spaces) and bike store
- Nearby amenities include Tesco, Starbucks, Toni & Guy etc

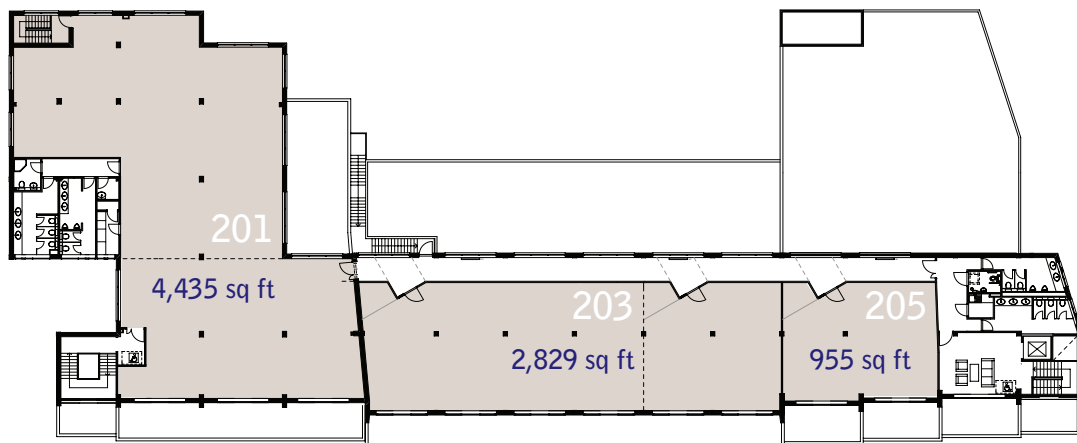
**AVAILABLE AUTUMN 2010**



# Berkshire House

## CENTRAL ASCOT

### Second floor



### First floor

